

A speedboat is shown moving across the water, leaving a white wake. Several people are on board, including a man in the driver's seat and a woman in the back. The boat is white with a blue stripe. The water is a clear blue. The text 'Rule 6' is overlaid in large, bold, teal letters with a dark outline. The text 'Safe Speed' is overlaid in large, orange letters with a dark outline, positioned below 'Rule 6'.

# Rule 6

Safe Speed

**Every vessel shall at all times proceed at a safe speed so that she can take proper and effective action to avoid collision and be stopped within a distance appropriate to the prevailing circumstances and conditions.**



A speedboat is shown moving across the water, leaving a white wake. A person is wakeboarding behind the boat. The boat has a metal tower with speakers and a person is visible at the helm. The water is a clear blue color.

**Safe Speed – is the speed a vessel can take to avoid collision.**

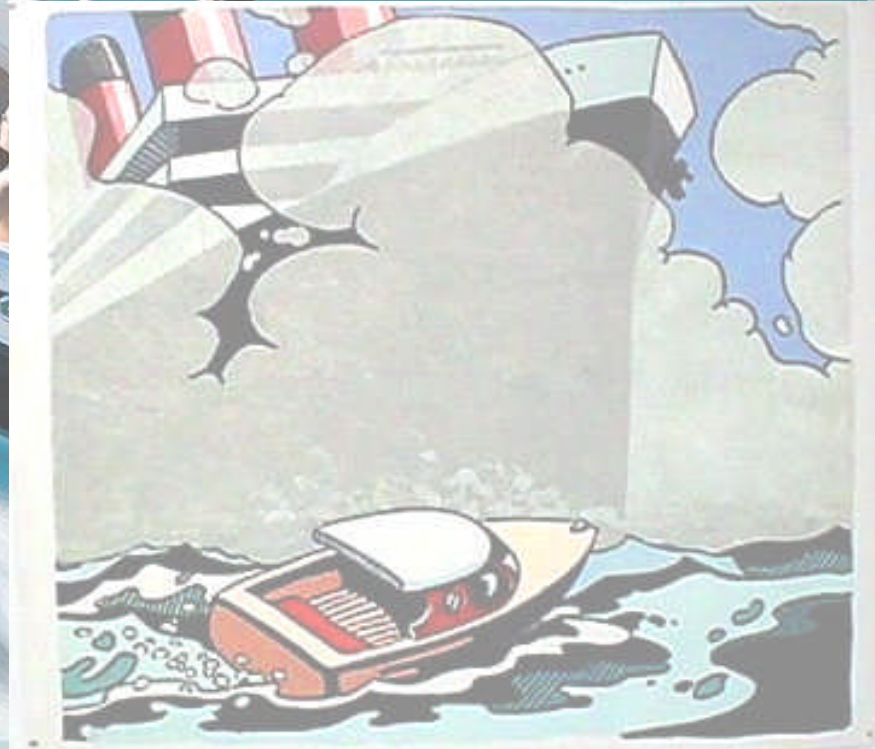
**Safe Speed – is the speed a vessel can be stopped within a distance appropriate to the prevailing circumstances and conditions.**

*In determining a safe speed the following factors shall be among those taken into account:*

**(a) By all vessels:**

**(i) the state of**

**visibility;**



**(ii) the traffic density including concentrations of fishing vessels or any other vessels;**



**(iii) the maneuverability of the vessel with special reference to stopping distance and turning ability in the prevailing conditions;**



**(iv) at night the presence of background light such as from shore lights or from back scatter of her own lights;**



**(v) the state of wind, sea and current, and the proximity of navigational hazards;**



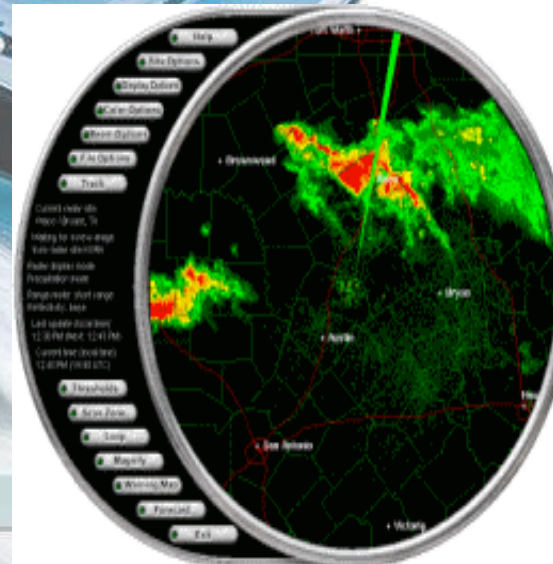
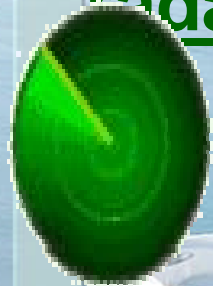


**(vi) the draft in relation to the available depth of water.**



**(b) Additionally, by vessels with operational radar:**

- (i) the characteristics, efficiency and limitations of the radar equipment;**
- (ii) any constraints imposed by the radar range scale in use;**
- (iii) the effect on radar detection of the sea state, weather and other sources interference;**



**(iv) the possibility that small vessels, ice and other floating objects may not be detected by radar at an adequate range;**  
**(v) the number, location and movement of vessels detected by radar;**  
**(vi) the more exact assessment of the visibility that may be possible when radar is used to determine the range of vessels or other objects in the vicinity.**





skypic.com

ort, RI Fall Ship  
Gallery 508-295



A speedboat is shown moving across the water, leaving a white wake. The boat is white with blue accents and has a person visible at the helm. The background is a clear blue sky and water. The text "END OF RULES" is overlaid in large, bold, yellow, 3D-style letters. The letters have a slight shadow and are positioned in the center of the image. The overall scene is bright and sunny.

# END OF RULES