

Rule 30

Anchored Vessels and

Vessels Aground

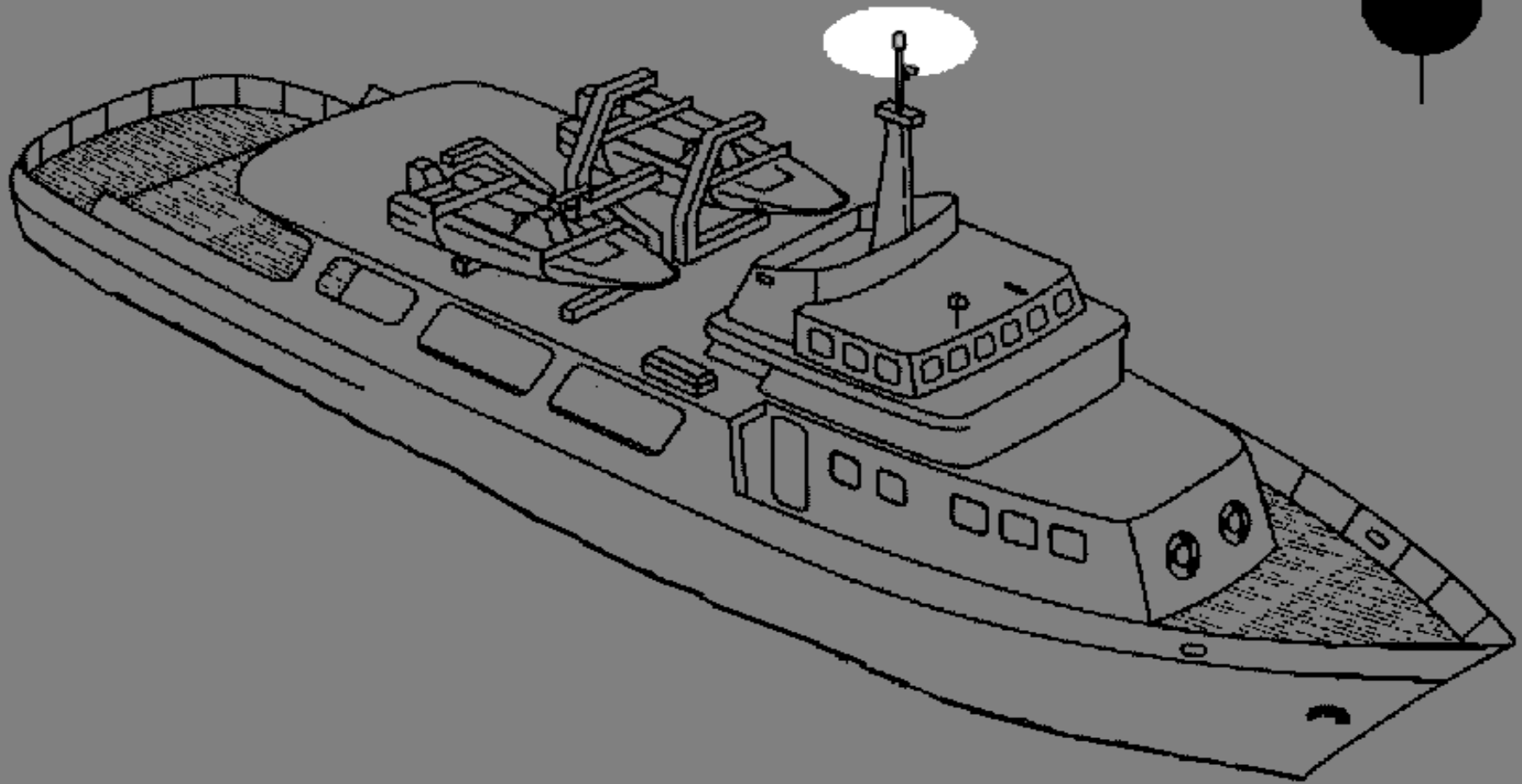
A large white vessel is at anchor on the sea. The vessel has a prominent red stripe along its side and is surrounded by a white wake. The background shows a clear blue sky and a calm sea.

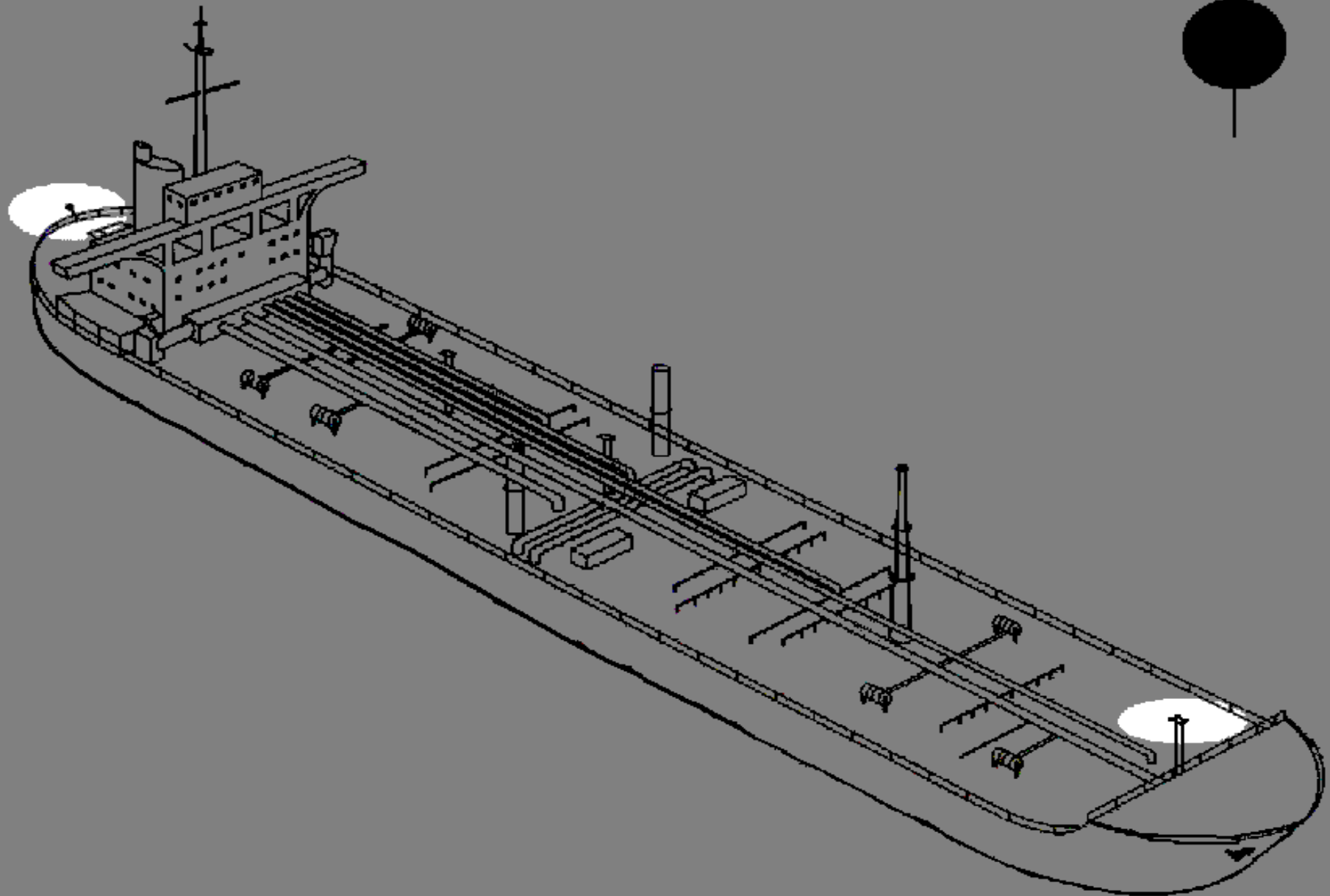
(a) A vessel at anchor shall exhibit where it can best be seen:

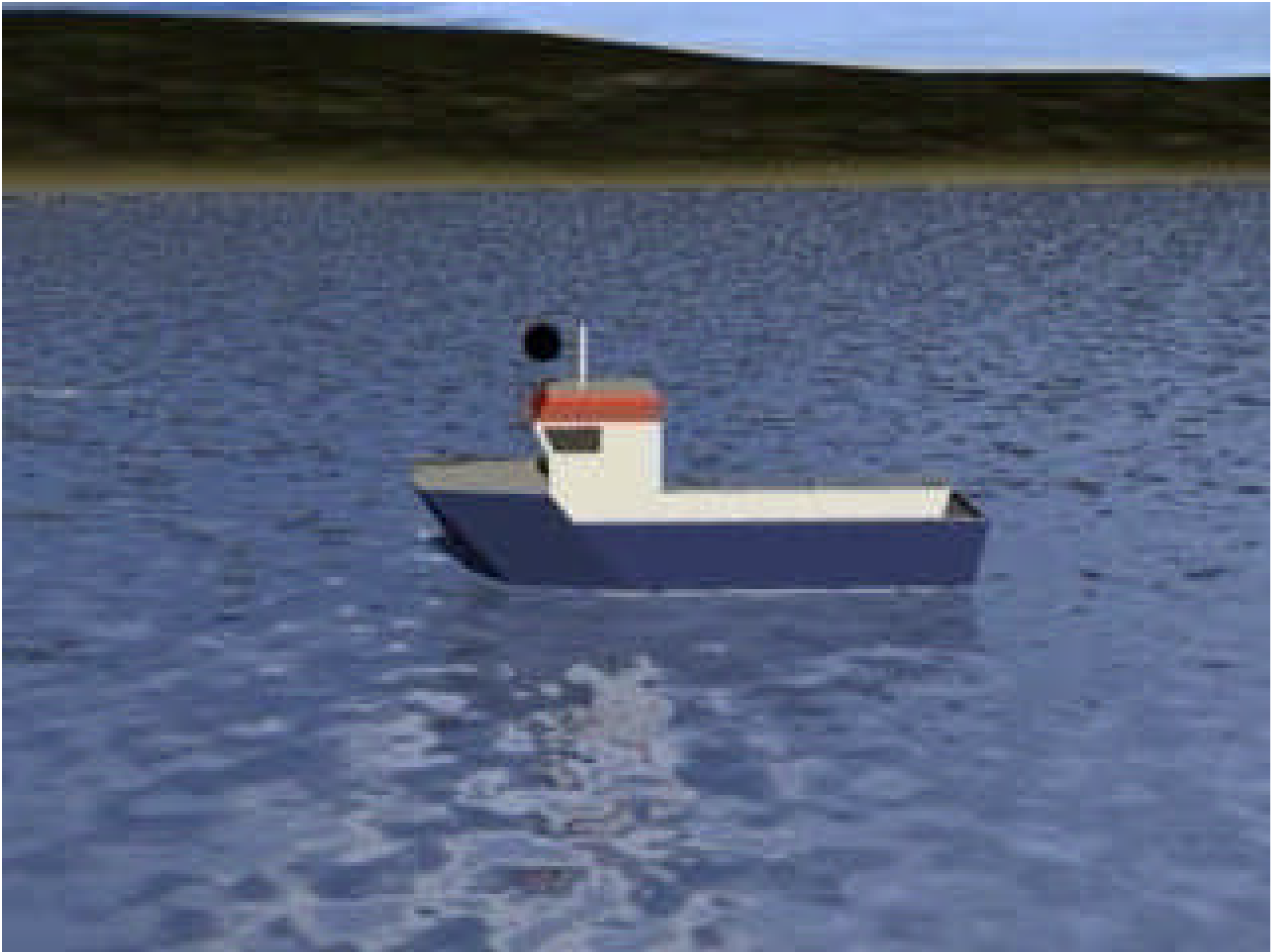
(i) in the fore part, an all-round white light or one ball;

(ii) at or near the stern and at a lower level than the light prescribed in subparagraph (i), an all-round white light.

(b) A vessel of less than 50 meters in length may exhibit an all-round white light where it can best be seen instead of the lights prescribed in paragraph (a) of this Rule.







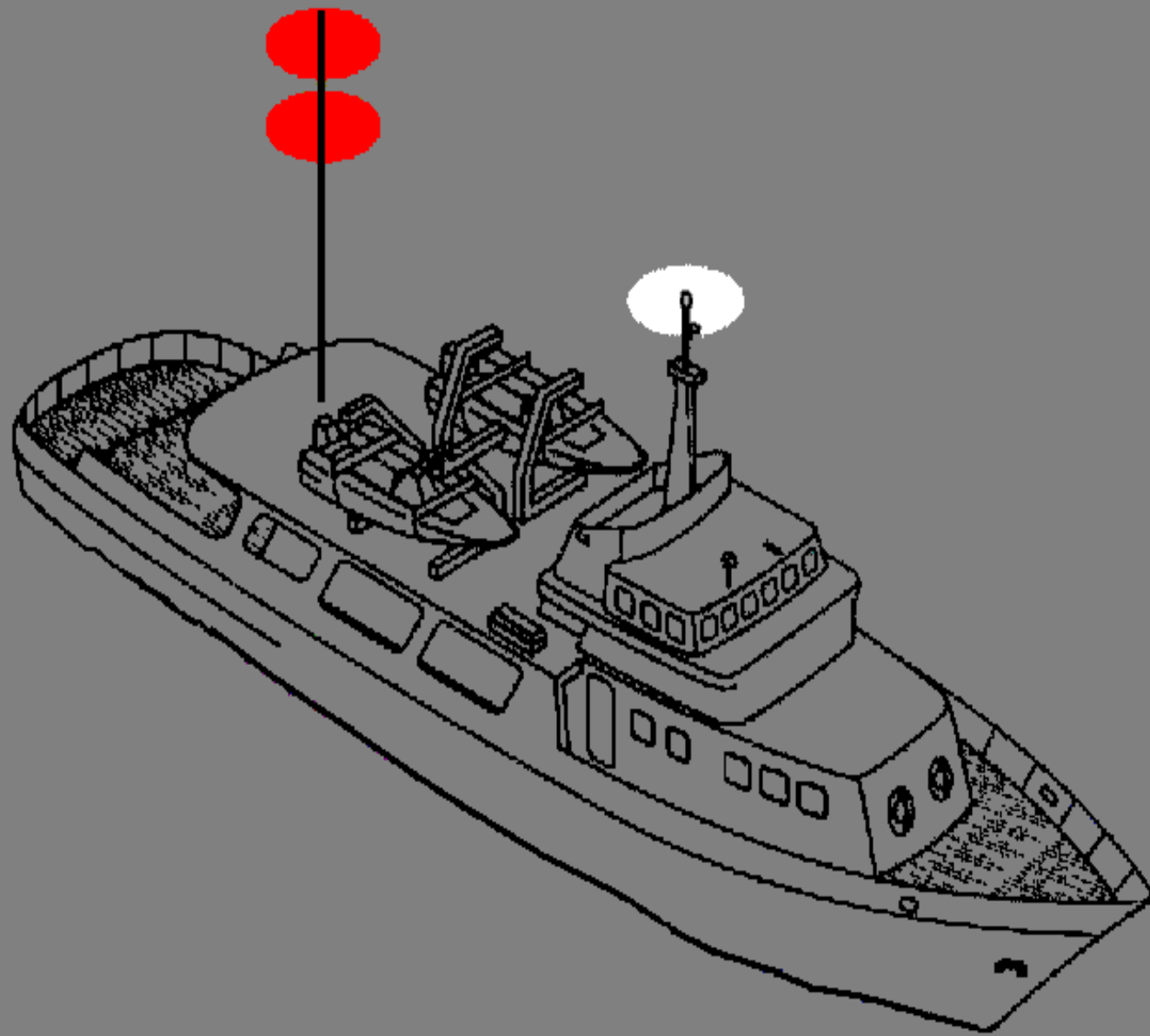
A large vessel, possibly a tugboat or barge, is aground on a sandy beach. The vessel is white with a red stripe along its side. In the background, a smaller red and white boat is visible on the water. The sky is clear and blue.

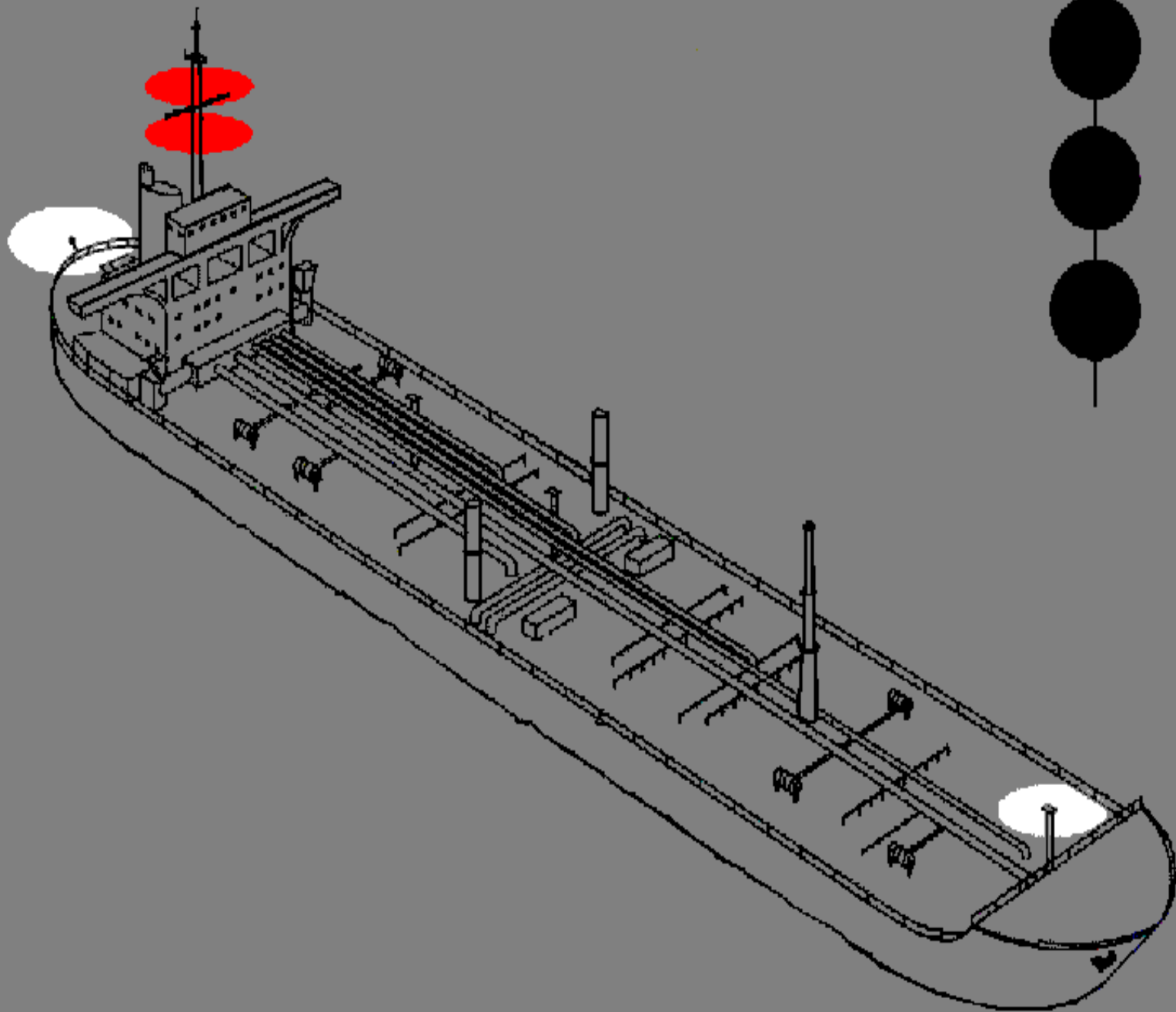
(d) A vessel aground shall exhibit the lights prescribed in paragraph

(a) or (b) of this Rule and in addition, where they can best be seen:

(i) two all-round red lights in a vertical line;

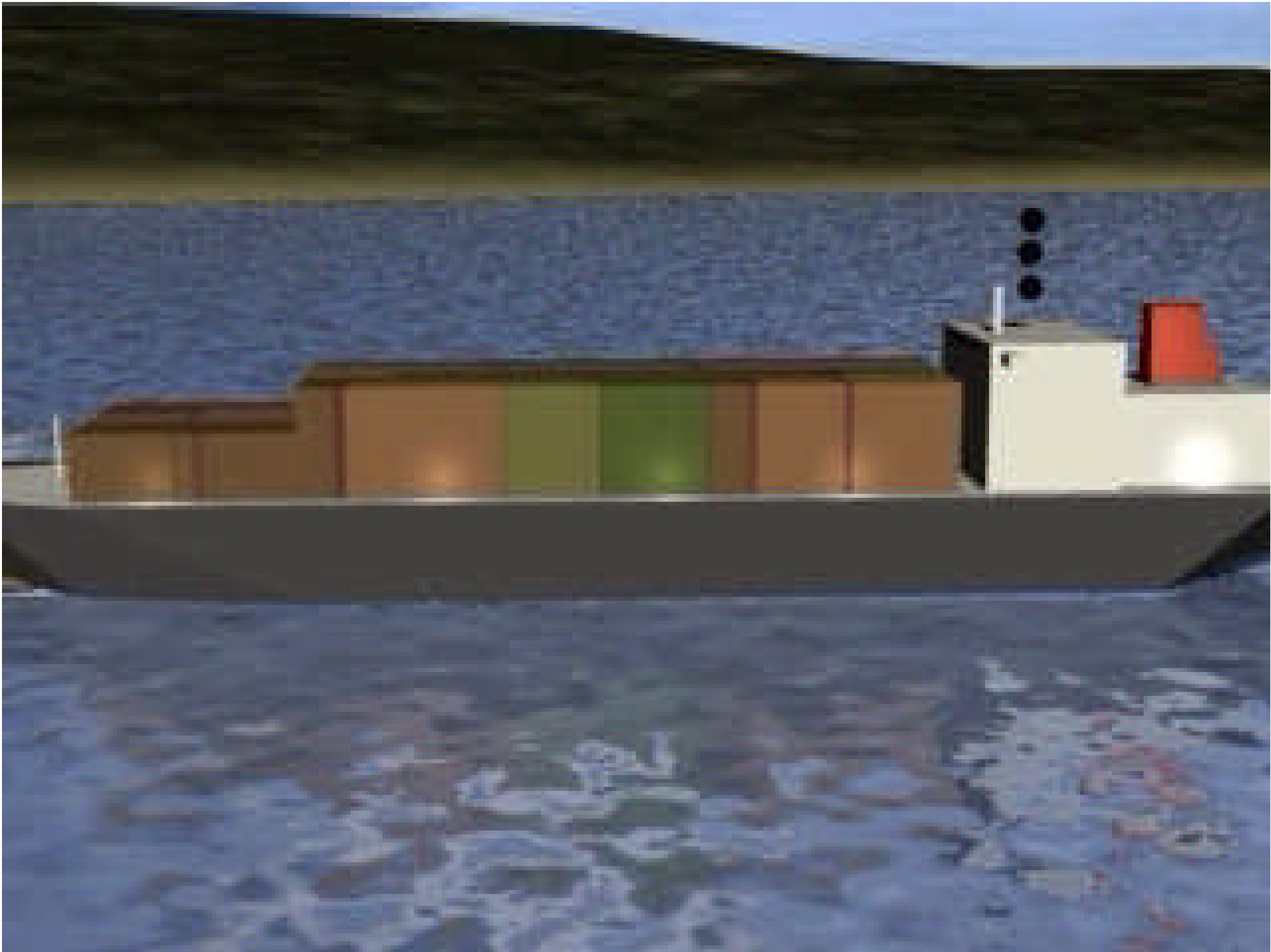
(ii) three balls in a vertical line.

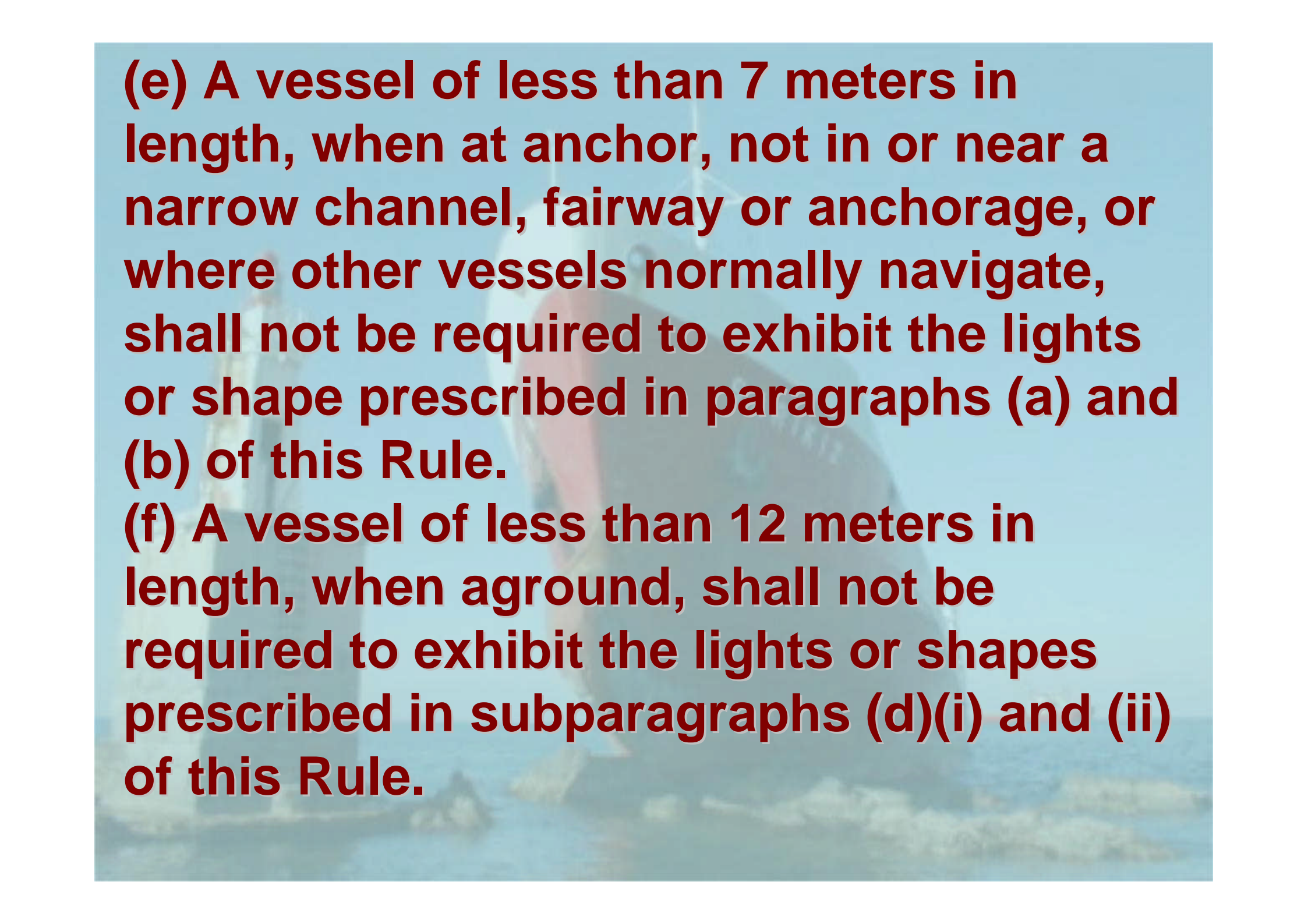










A person wearing a red long-sleeved shirt and a white cap is leaning over the side of a boat, possibly performing maintenance or work on the hull. The background shows a blue sky and a body of water.

(e) A vessel of less than 7 meters in length, when at anchor, not in or near a narrow channel, fairway or anchorage, or where other vessels normally navigate, shall not be required to exhibit the lights or shape prescribed in paragraphs (a) and (b) of this Rule.

(f) A vessel of less than 12 meters in length, when aground, shall not be required to exhibit the lights or shapes prescribed in subparagraphs (d)(i) and (ii) of this Rule.

End of Rule 30

The image features a large, blue-hued photograph of a ship at sea. The ship is the central focus, with its white superstructure and dark hull visible. The text 'End of Rule 30' is superimposed over the ship in a large, bold, yellow font. The text is slightly slanted and has a dark shadow cast beneath it, giving it a three-dimensional appearance. The background shows the ocean and a clear sky.