

Rule 19

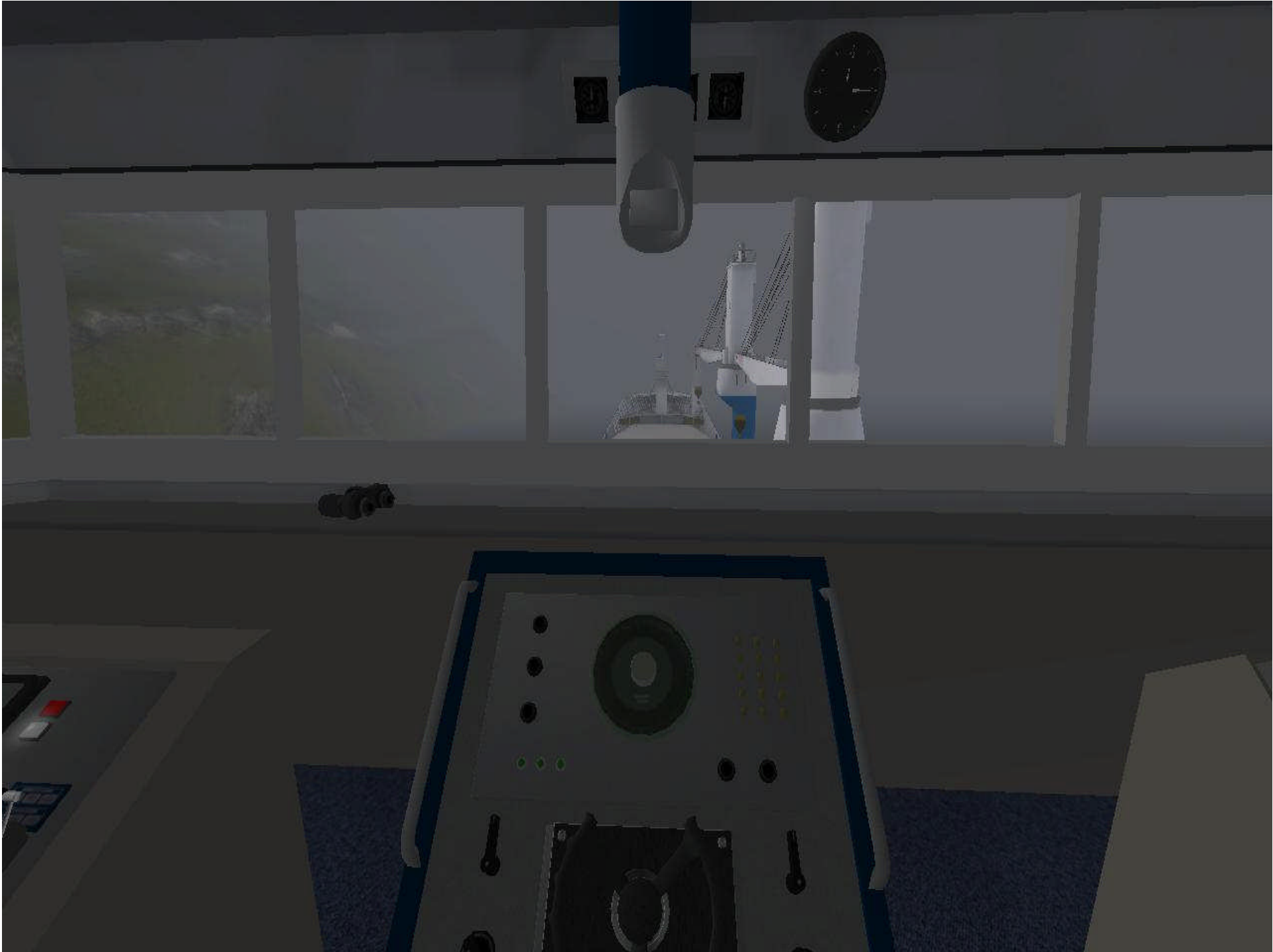
Conduct of Vessels in

Restricted Visibility



(a) This Rule applies to vessels not in sight of one another when navigating in or near an area of restricted visibility.







(b) Every vessel shall proceed at a **safe speed adapted to the prevailing circumstances and conditions of restricted visibility. A power driven vessel shall have her engines ready for immediate maneuver.**





Every vessel shall at all times proceed at a **safe speed** so that she can take proper and effective action to avoid collision and be stopped within a distance appropriate to the prevailing circumstances and conditions.



(c) Every vessel shall have due regard to the prevailing circumstances and conditions of restricted visibility when complying with Rules of Section I of this Part.





Section I – Conduct of vessels in any condition of visibility

 ***Rule 4 – Application***

 ***Rule 5 – Look-out***

 ***Rule 6 – Safe Speed***

 ***Rule 7 – Risk of Collision***

 ***Rule 8 – Action to avoid collision***

 ***Rule 9 – Narrow Channels***

 ***Rule 10 – Traffic Separation Schemes***

(d) A vessel which detects by radar alone the presence of another vessel shall determine if a close-quarters situation is developing and/or risk of collision exists. If so, she shall take avoiding action in ample time, provided that when such action consists of an alteration of course, so far as possible the following shall be avoided:

**(i) an alteration of
course to port for a
vessel forward of the
beam, other than for a
vessel being overtaken;
and**



(ii) an alteration of course toward a vessel abeam or abaft the beam.



- **If a vessel detects another vessel by radar alone, it shall:**
 - **Determine if a close quarters situation is developing and/or a risk of collision exists**
 - **Take avoiding action early**
 - **The following should be **AVOIDED****
 - **Turn to port for a vessel forward of the beam**
 - **An alteration of course toward a vessel abeam or abaft of beam**

(e) Except where it has been determined that a risk of collision does not exist, every vessel which hears apparently forward of her beam the fog signal of another vessel, or which cannot avoid a close-quarters situation with another vessel forward of her beam, shall reduce her speed to the minimum at which she can be kept on course. She shall if necessary take all her way off and, in any event, navigate with extreme caution until danger of collision is over.

Range 3

North-up

SP

TM

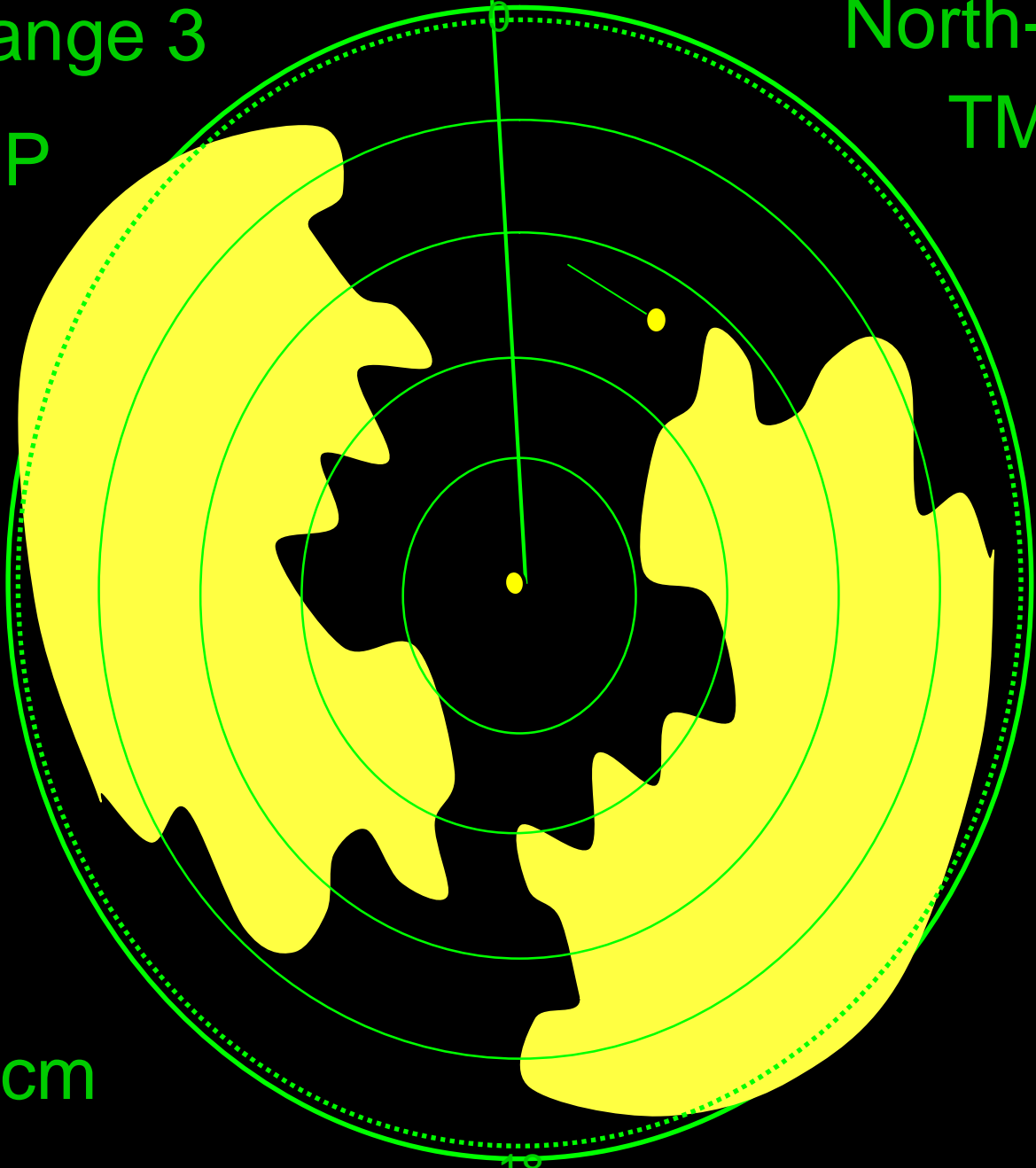
27
0

09
0

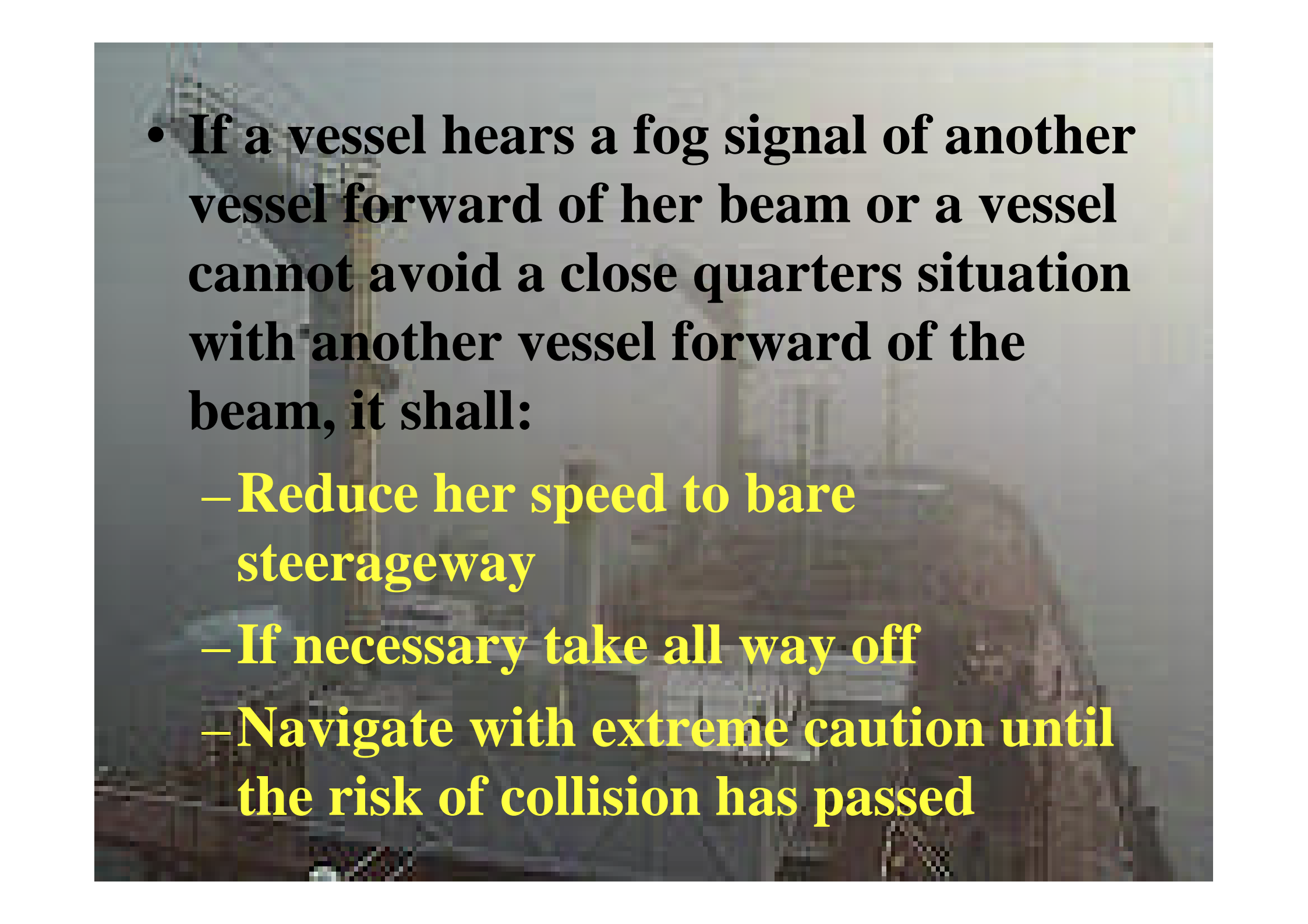
3 cm

00

18





- 
- A large ship is visible in the distance, partially obscured by a thick layer of fog. The ship's structure, including its masts and upper decks, is visible against the grey, misty background. The overall scene conveys a sense of low visibility and potential maritime hazard.
- **If a vessel hears a fog signal of another vessel forward of her beam or a vessel cannot avoid a close quarters situation with another vessel forward of the beam, it shall:**

- **Reduce her speed to bare steerageway**

- **If necessary take all way off**

- **Navigate with extreme caution until the risk of collision has passed**





The image features a 3D rendered cityscape at sunset. The sky is a gradient of orange, yellow, and grey, with a bright sun low on the horizon. The city buildings are dark and silhouetted against the sky. In the foreground, there are dark, textured structures that look like a bridge or a set of stairs. Overlaid on this scene is the text "End of Rule 19" in a large, bold, yellow, stylized font. The text has a slight shadow and is positioned in the center of the image.

End of Rule 19