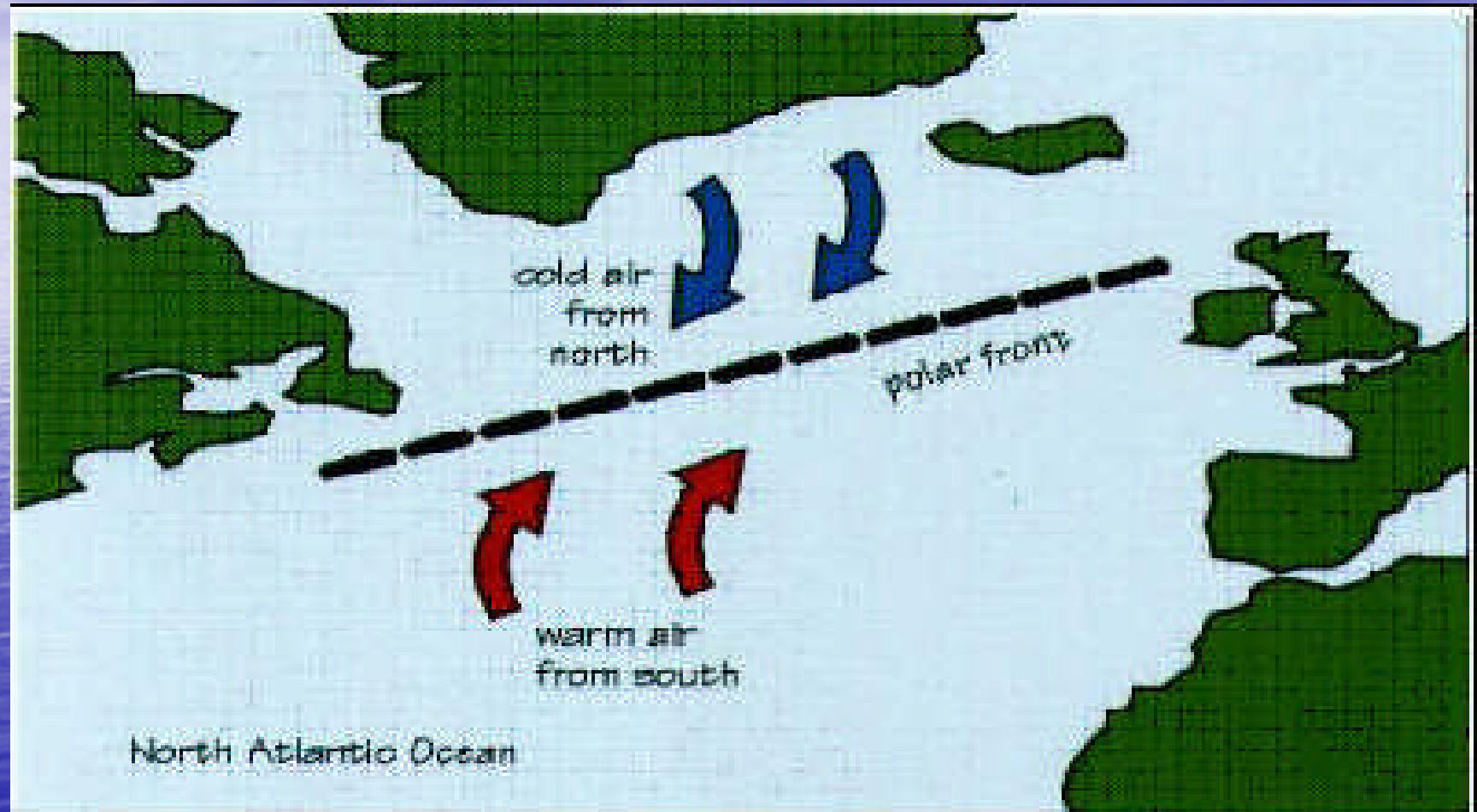


A blue-tinted photograph of a vast ocean under a cloudy sky. The water is a deep blue, and the sky is a lighter blue with wispy white clouds. The horizon line is visible in the distance.

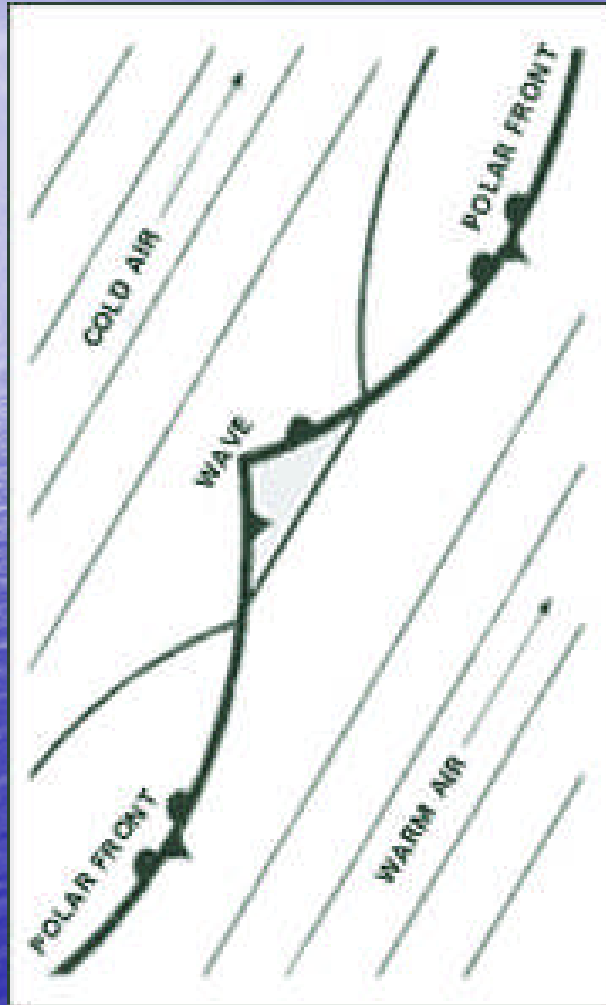
LOW

2/M John R. Jaromahum

Polar front Depression

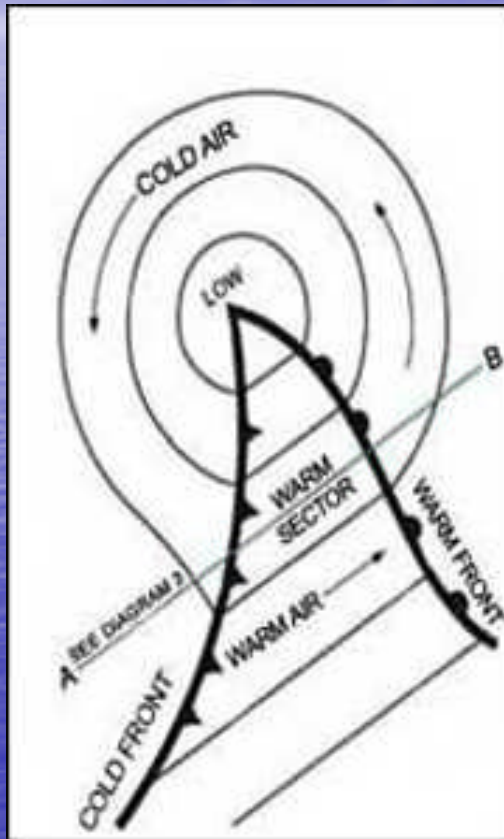


Wave on polar front



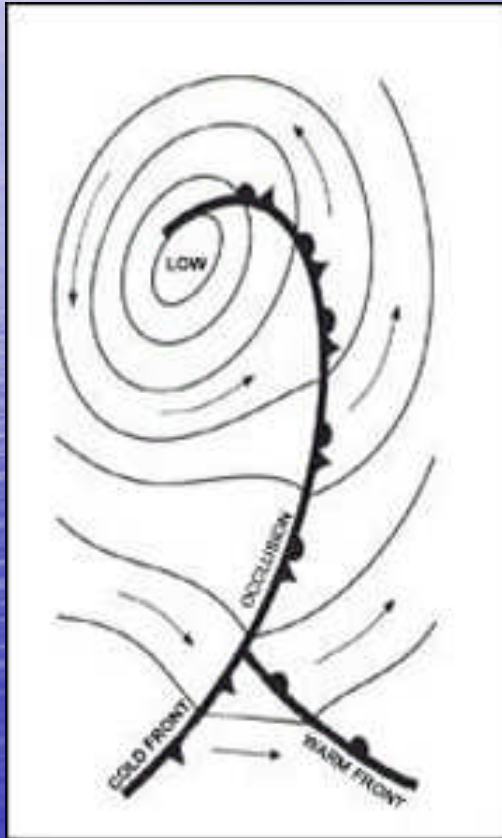
- These depressions form and develop on what the weatherman calls the Polar Front - a narrow belt where warm moist air from the equatorial belt meets the cold air of the polar regions. the diagrams illustrate what is taking place. The depression begins as a minor wave on the polar front.

Active depression



- As this wave develops, a major depression is formed with an active warm front and cold front system.

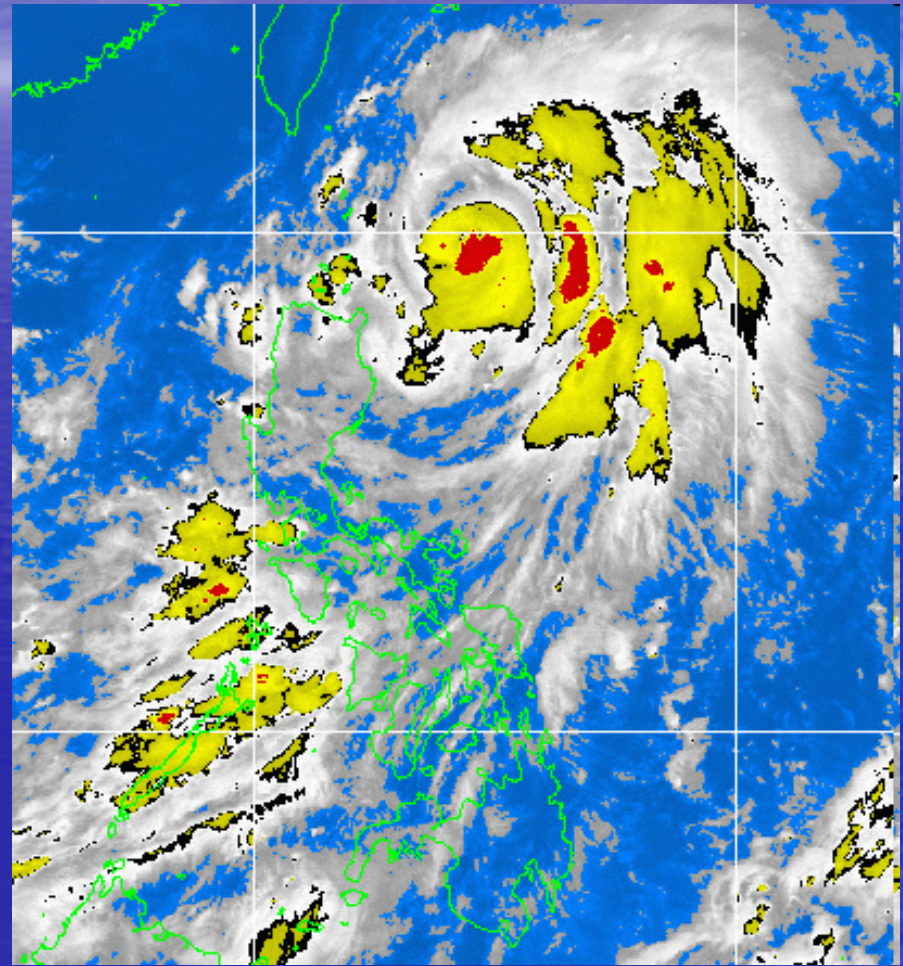
Dying depression



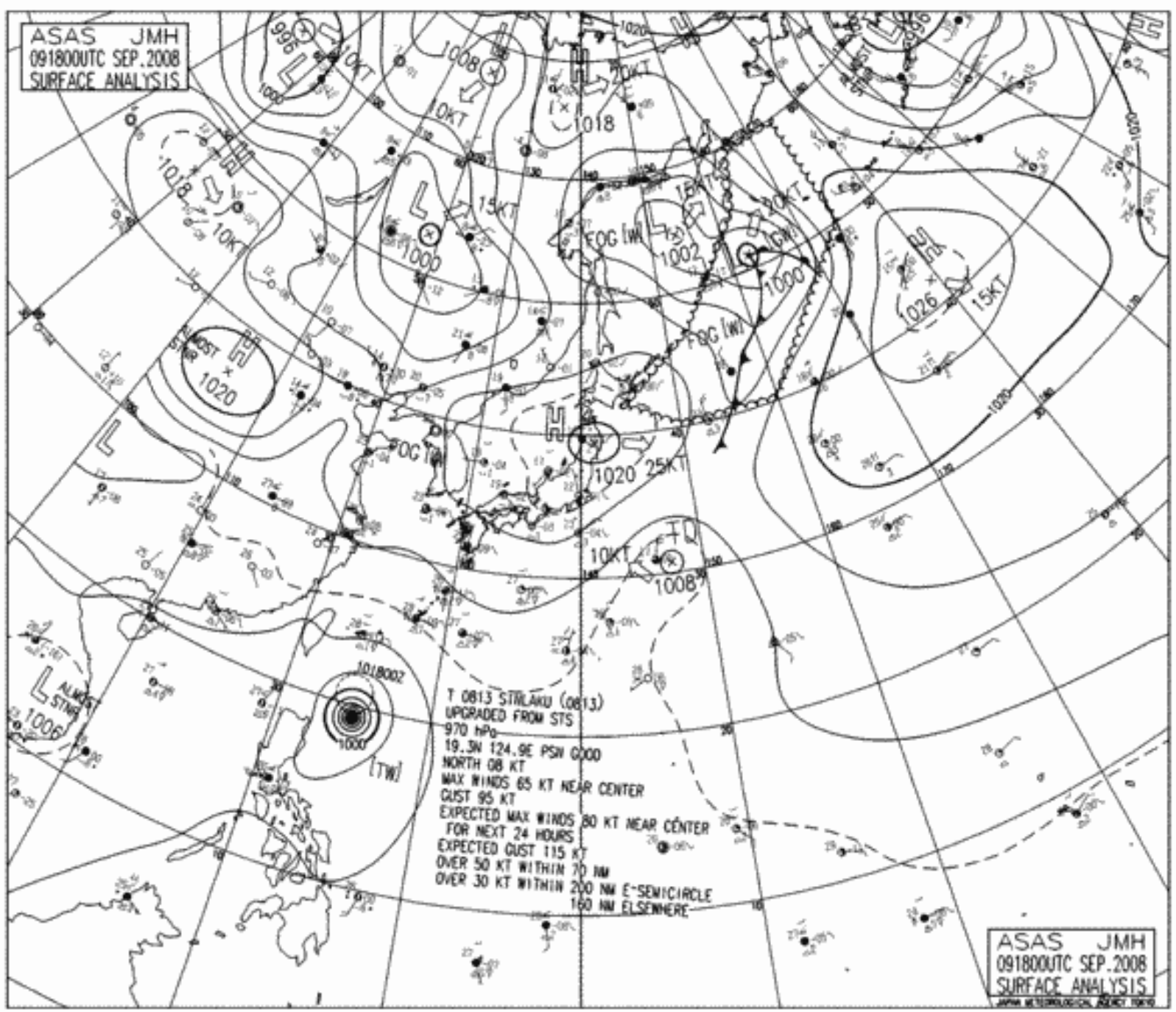
- As the depression declines, the cold air in the rear part overtakes and lifts the warm air off the surface and an occlusion is formed.

Depression

- it is another name for an area of low pressure, a low, or trough. It also applies to a stage of tropical cyclone development and is known as a tropical depression to distinguish it from other synoptic features.



ASAS JMH
091800UTC SEP.2008
SURFACE ANALYSIS

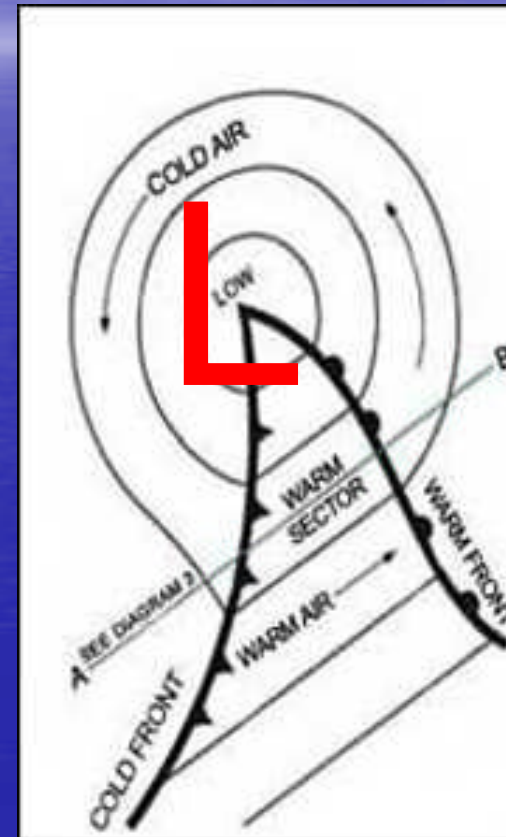


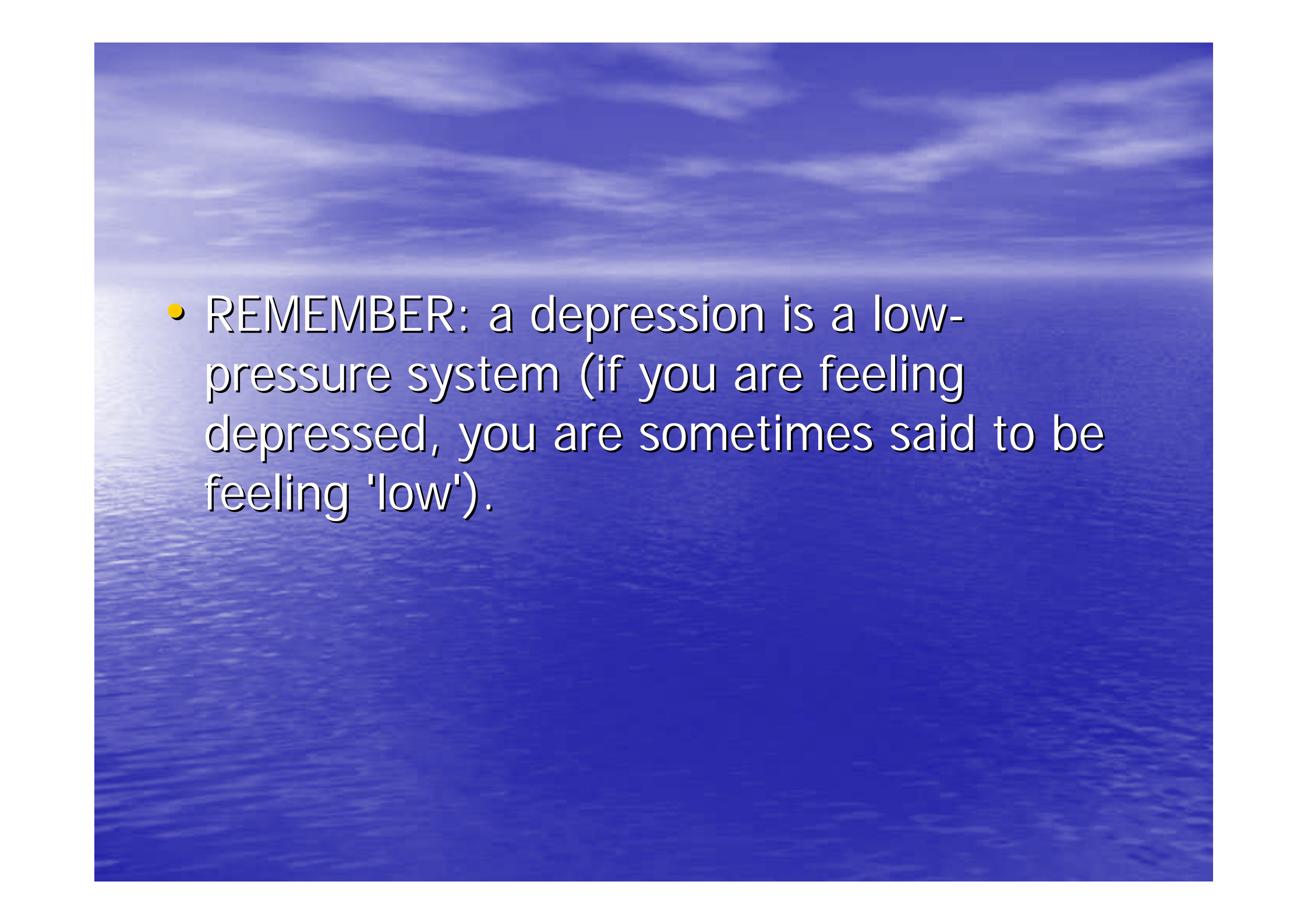
T 0813 SIBLAKU (0813)
UPGRADED FROM STS
970 hPa
19.3N 124.9E PSN GOOD
NORTH 08 KT
MAX WINDS 65 KT NEAR CENTER
GUST 95 KT
EXPECTED MAX WINDS 80 KT NEAR CENTER
FOR NEXT 24 HOURS
EXPECTED GUST 115 KT
OVER 50 KT WITHIN 70 NM
OVER 30 KT WITHIN 200 NM E-SEMICIRCLE
160 NM ELSEWHERE

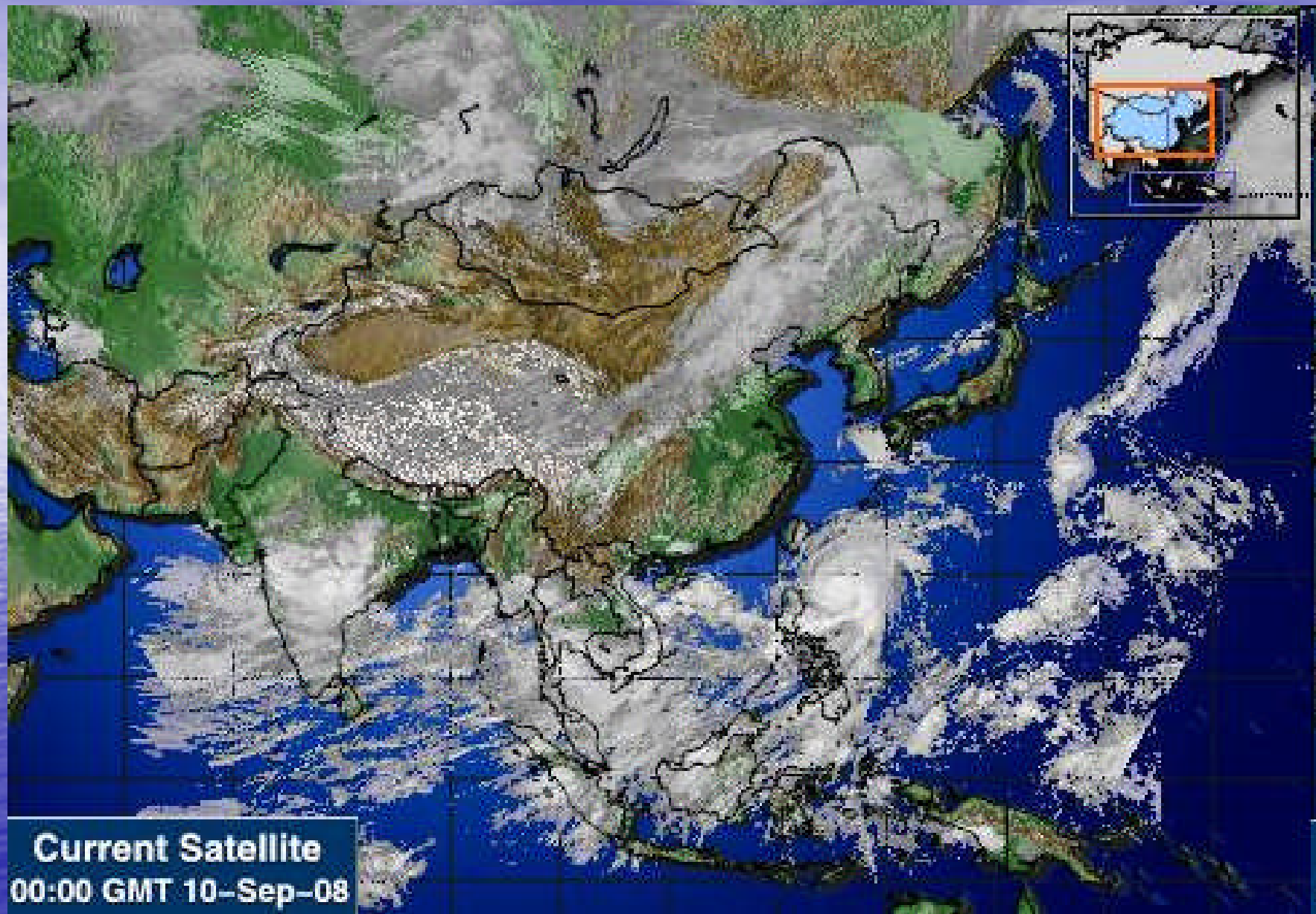
ASAS JMH
091800UTC SEP.2008
SURFACE ANALYSIS
JMW METEOROLOGICAL SKETCH 1010

Weather on the passage of through of a low

- 950 and 1020 millibars
- bring cloud and rain
- strong winds



- 
- REMEMBER: a depression is a low-pressure system (if you are feeling depressed, you are sometimes said to be feeling 'low').



Current Satellite
00:00 GMT 10-Sep-08

19:00 09-SEP-2008 GMT ©Copyright WSI Corporation <http://www.wsi.com>

